

# Hussar (L)

HUSSAR was designed to meet the demands of the chaotic, mobile world of today, focusing on providing comfort to people who crave for intimacy to be able to talk, work or relax in a public space during their busy days when working or travelling. This is a line of seats which gives you the possibility to apply three backrest heights: 90 cm, 130 cm and 170 cm. The variety of heights makes it possible to comfortably arrange large and medium-size spaces like hotels, offices, airports, to shape the interior's prevailing character by means of furniture, as well as to develop small, intimate areas within the interior, which are valuable in public spaces. The HUSSAR collection includes: a sofa, an armchair, a pouffe and a table.

## IMAGES

---



## FINISHES

### Medley

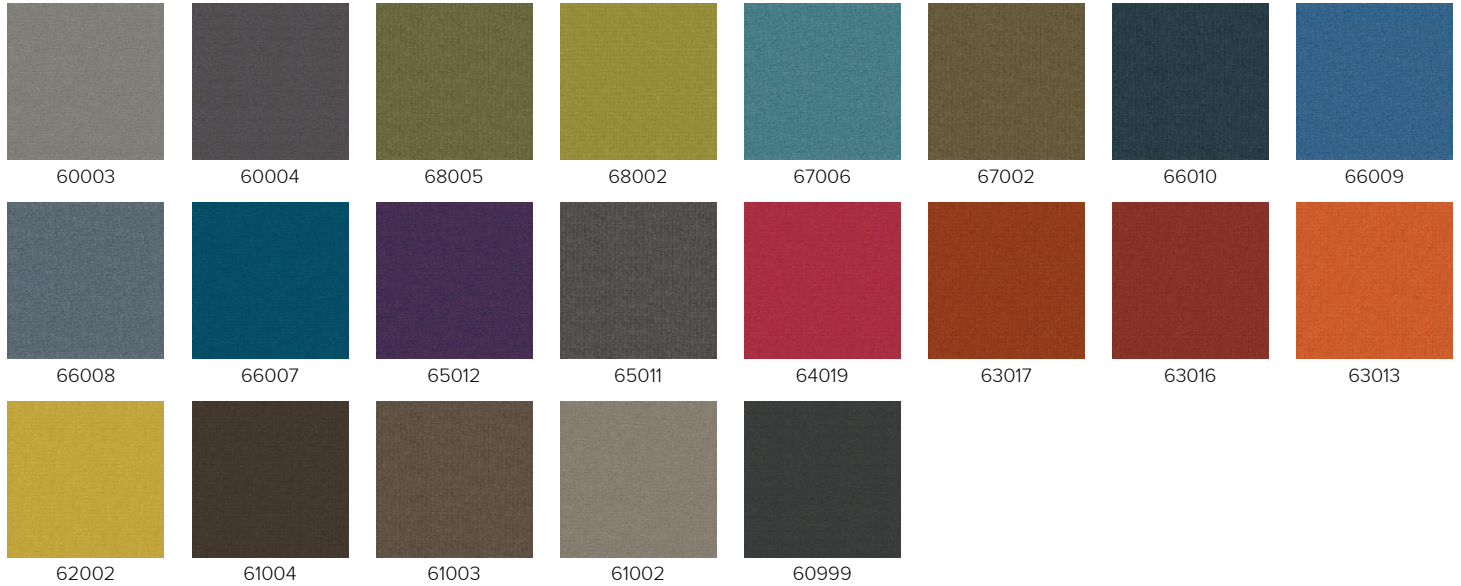
Medley is woven in 100% polyester melange yarn with a simple, geometric structure. The tight texture and changing structure of the yarn give the fabric an intense colour depth and a lively surface in multiple shades. The weave structure accentuates the richness of every single nuance and creates a discreet colour play across the fabric's surface. Nuances fuse gently and with varying saturation and intensity, depending on the incident angle of the light.

**Martindale:** 75,000

**Fire Rating:** EN 1021 1&2 BS 5852, Crib 5 Calif.Bull.117E UNI, 9175 Class 2.IM AM18-NF D 60-013, IMO A.652 (16), IMO/MED Certificate

**Weight:** 510g/lin. m

**Material:** 100% Polyester



### Remix 2

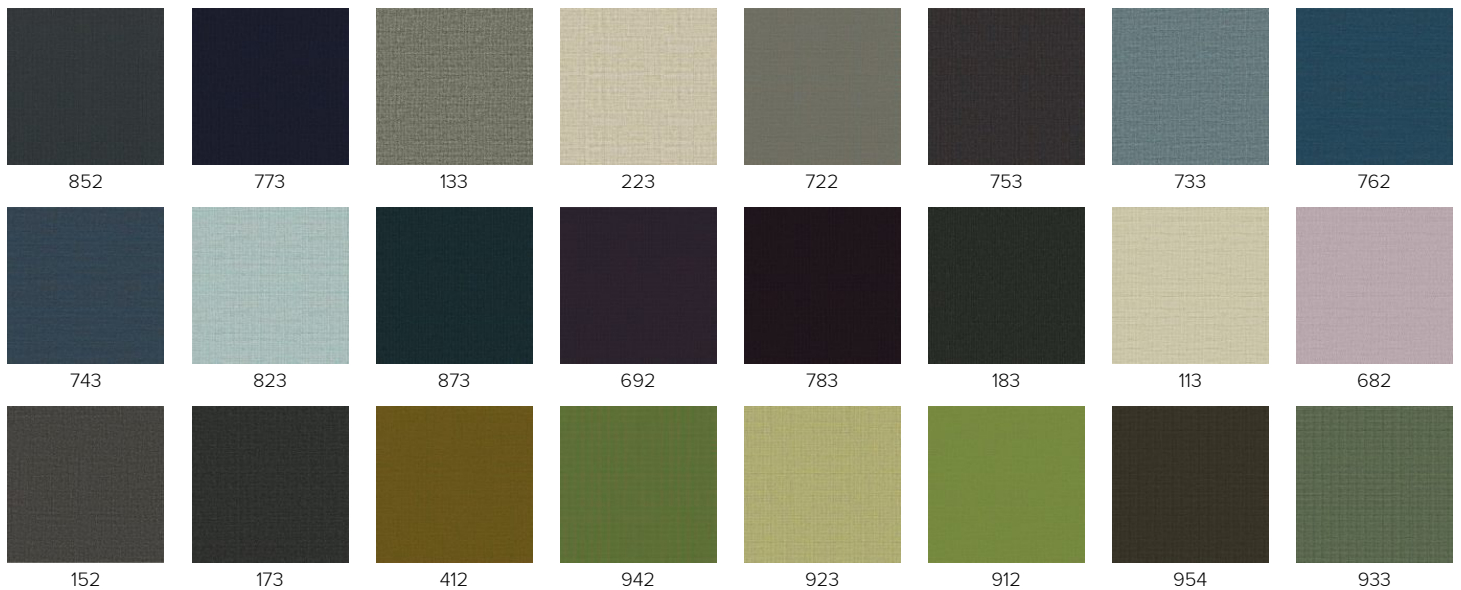
Remix is a woollen upholstery fabric, created by the acclaimed Italian designer Giulio Ridolfo. Remix is made from melange yarns, with each thread consisting of three different colours. For each colourway, two different threads are used. The result is irregular colours playing across the surface of the fabric. It is available in many colours, ranging from burnt reds and oranges, dusty blues and greens and subtle charcoal tones to natural shades of yellow, beige and sand.

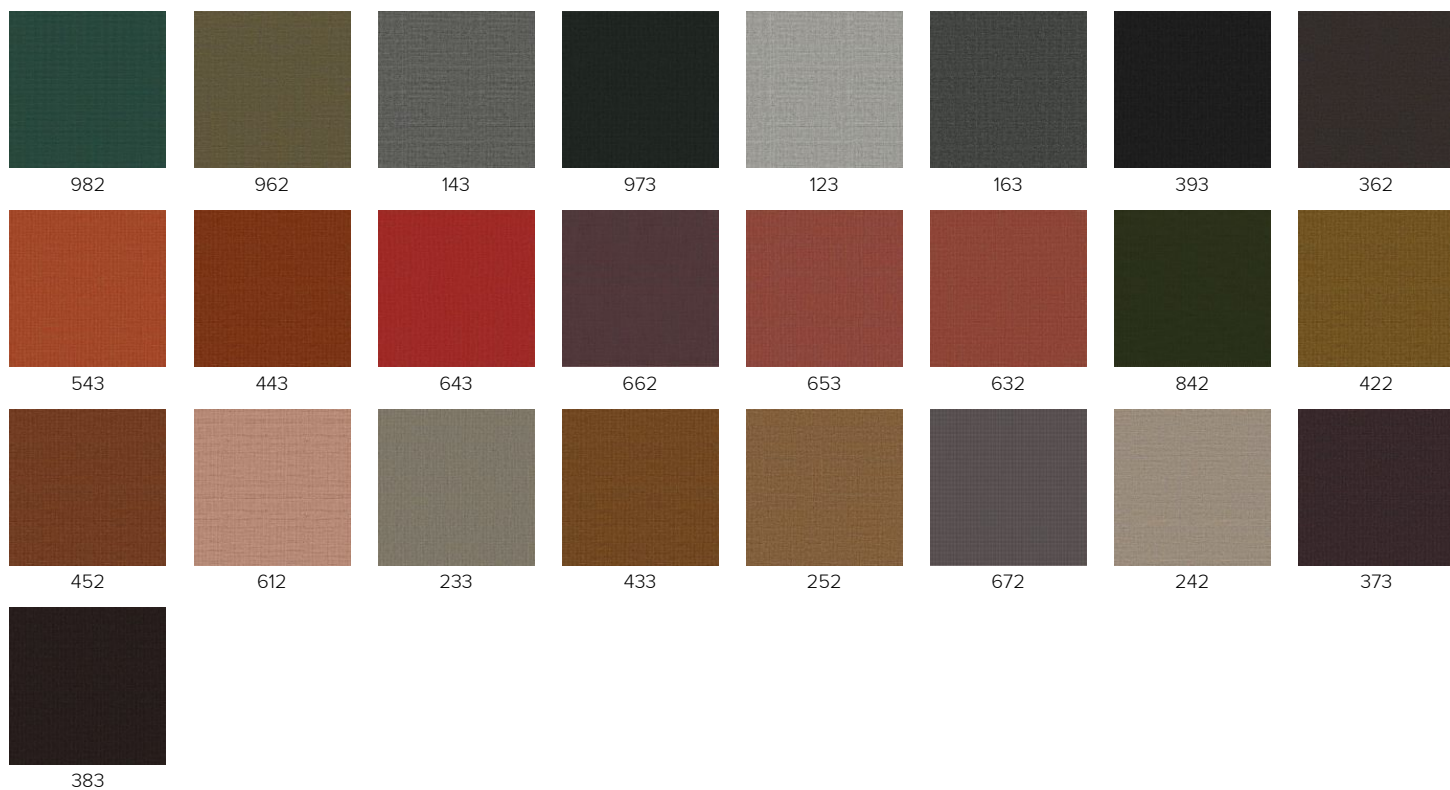
**Martindale:** 100,000

**Fire Rating:** EN 1021 1/2 ignition source 0-1. BS 5852 ignition source 2-3, Önorm B1/Q1 NF D 60-013, UNI 9175 1 IM, US Cal.Tech.Bull 117 AS/NZ 3837, Class 2.IMO A.652(16), Crib 5 & B2 when flame protected

**Weight:** 415 g/lin. m

**Material:** 90% Wool, 10% Nylon





## Step & Step Melange

Step is unique in both texture and performance. With its delicate surface, Step is perceived as vivid and interesting. The texture with the fire-resistant Trevira CS yarn ensures that the fabric is suited for use in environments with high fire safety and durability requirements. The uni-coloured Step has a counterpart in the heathered Step Melange, and when they're used in an integrated upholstery, it's a good idea to use Step Melange in exposed areas where the mottled expression of the fabric will have an automatically masking effect. With its pure nuances, Step is an eye catcher and adds a sculptural effect to the upholstery.

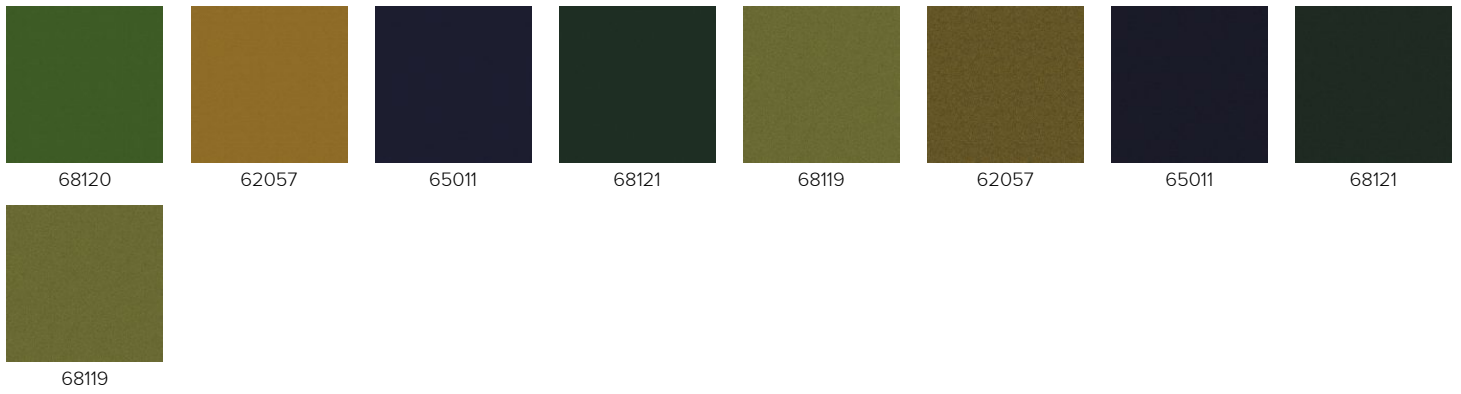
**Martindale:** 100,000

**Fire Rating:** EN 1021 1&2, BS 5852 crib 5, FAR/JAR 25853, DIN 4102;B1 NFP 92-503;M1, BS 7176 Med.Hazard, IMK Res.A652 (16) MED Certificated IMO, UNI 9175 class 1/EMME, Calif.Tech.Bull. 117, Önorm 3825 B1/Q1, BS 5852 P1 0&1, AM 18- NF D 60-013

**Weight:** 470 g/lin. m

**Material:** 100% Trevira

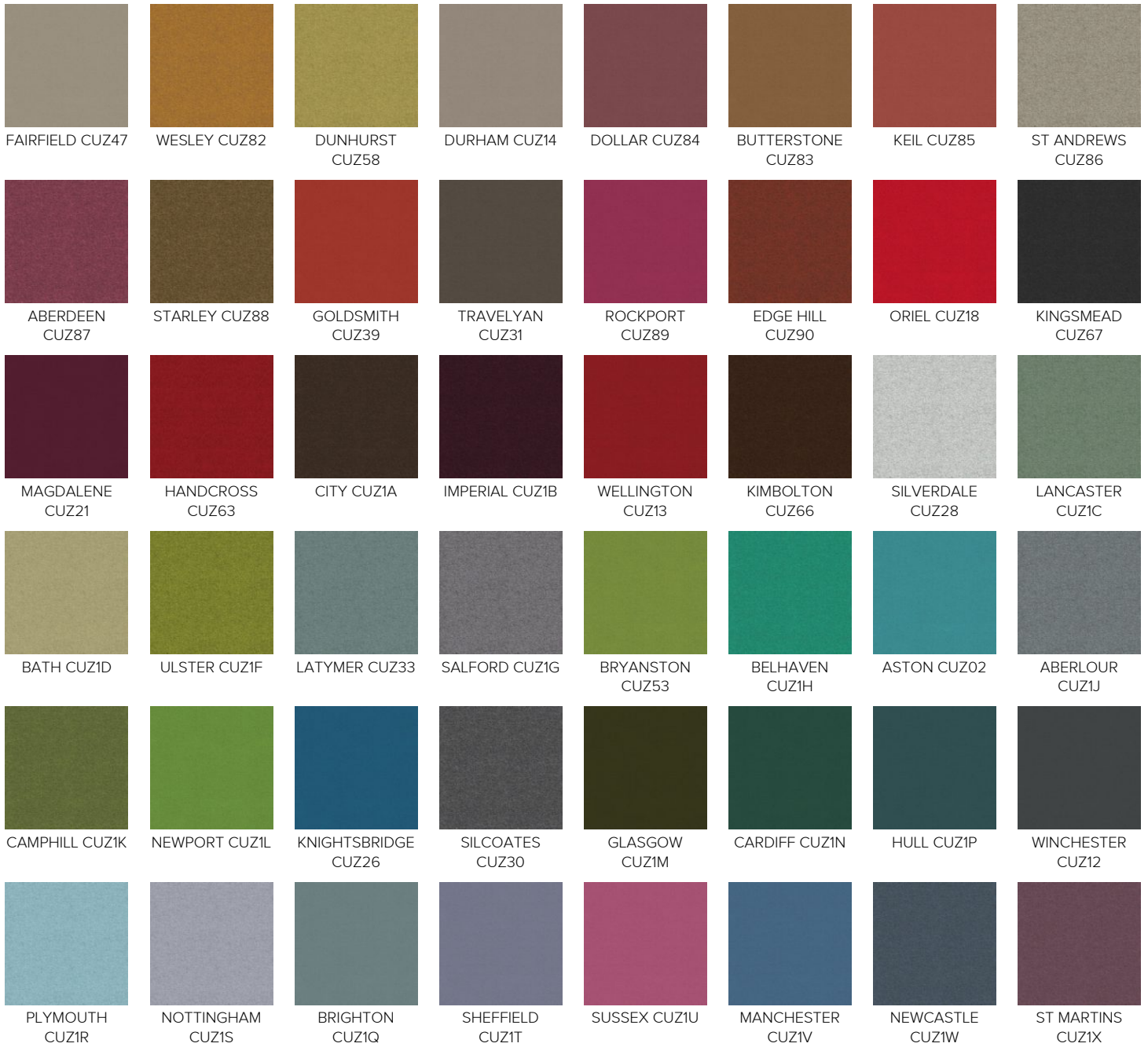




## Blazer

Blazer is a classic pure new wool upholstery fabric with a billiard cloth felted finish. The fabric is made from premium New Zealand lambswool and benefits from complete integrity right from individual sheep farms to the finished fabric.

**Martindale:** 50,000  
**Fire Rating:** BS EN 1021 – 1:2006 (cigarette), BS EN 1021 – 2:2006 (match), BS 7176:2007 Low Hazard, UNI 9175 Classe 1 IM  
**Weight:** 460 g/m2  
**Material:** 100% Wool





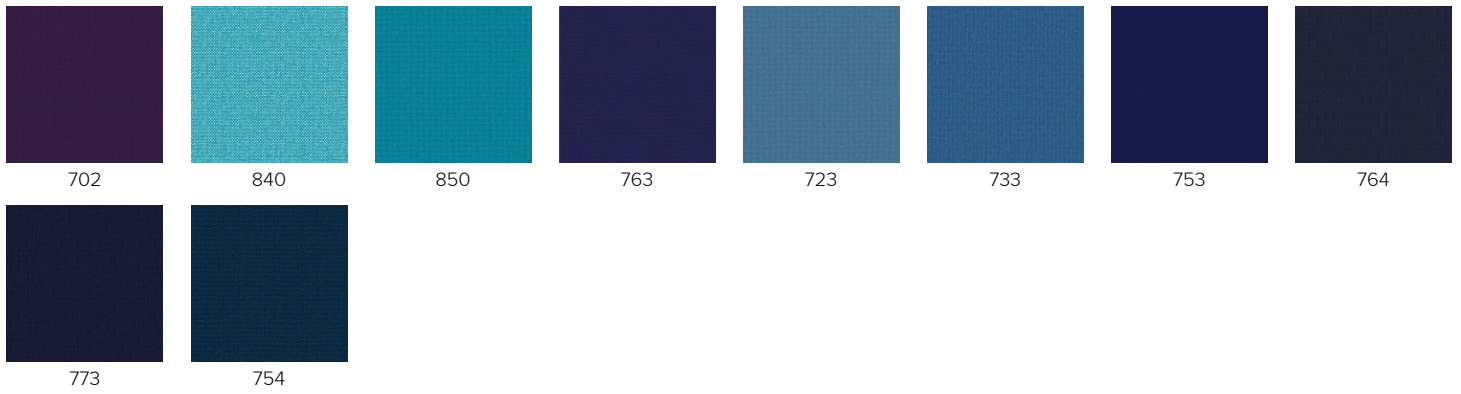


## Hallingdal 65

Kvadrat's first textile 'Hallingdal' has become the archetype of woollen textiles. The very durable upholstery fabric was originally designed in 1965 by Nanna Ditzel, and is now available in a version with an updated colour scale: Hallingdal 65. Hallingdal 65 is made of wool and viscose, which complement each other well: the wool provides excellent durability and flexibility, whilst the viscose adds brilliance and depth to the colour. Both materials are dyed before they are spun, which highlights the rich texture of the fabric.

**Martindale:** 100,000  
**Fire Rating:** EN 1021-1/2, ignition source 2-5, DIN 4102 B2, Önorm B1/Q1, UNI 9175/UNI 9176, IIM, US Cal.Tech.Bull. 117, IMO A.652(16), M2 when flame protected  
**Weight:** 795 g/lin. m  
**Material:** 70% Wool, 30% Viscose





## Samoa

Thickness: 1,2-1,4 mm  
 Material: Natural Corrected Leather

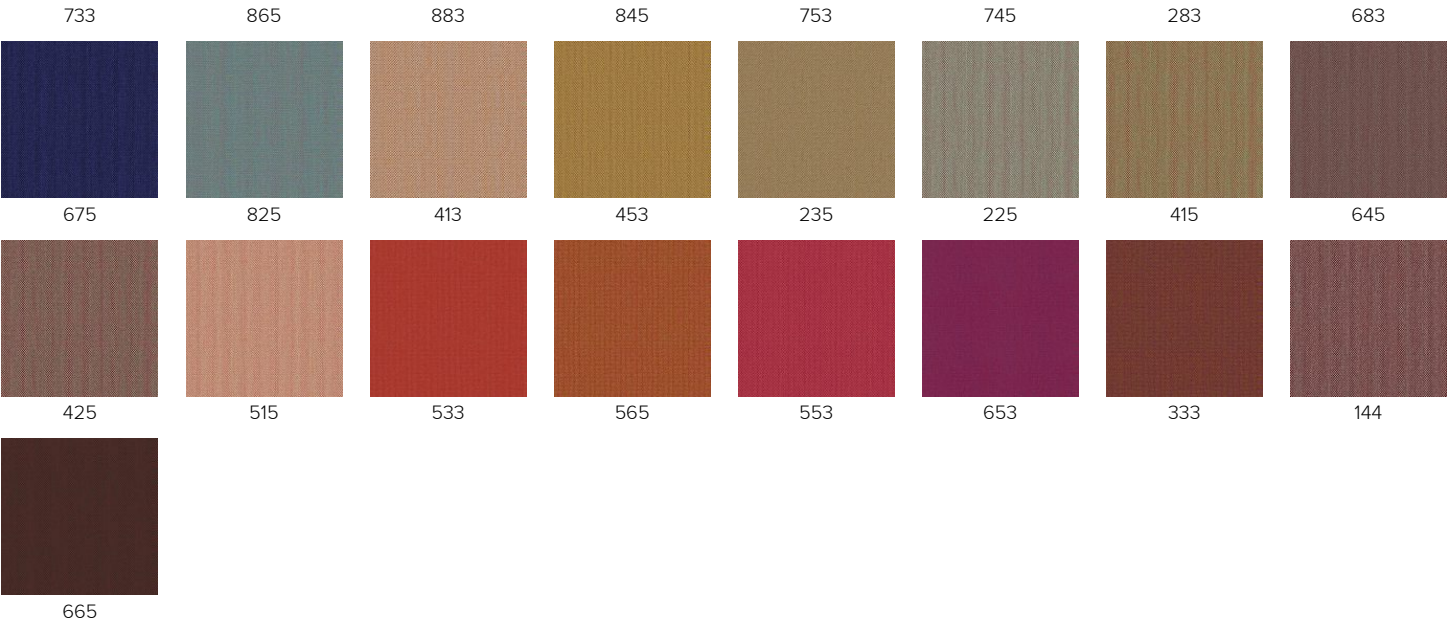


## Steelcut Trio 2

Steelcut Trio 2 is a hardwearing upholstery textile, which has the same construction as Steelcut 2. Designed by Frans Dijkmeijer and coloured by Giulio Ridolfo, it is now available in a wider choice of colours. Like Steelcut 2, Steelcut Trio 2 features an innovative weave, which gives the fabric a three-dimensional surface resembling small pyramids or steel points and, despite the complexity of the weave, a simple and precise expression.

Martindale: 80,000  
 Fire Rating: EN 1021-1/2, ignition source 0-1, BS 5852 ignition source 2-3, DIN 4102 B2 Önorm B1/Q1 NF D 60-013, UNI 9175 1IM, US CAI.Tech.Bull. 117 NFPA 260, AS/NZS 3837 Class 2, IMO A.652(16) Crib 5 when flame protected  
 Weight: 770 g/lin. m  
 Material: 90% Wool, 10% Nylon







Available variants:



Hussar Armchair, Low Backrest



Hussar Armchair, Medium Backrest



Hussar Armchair, High Backrest



Hussar 2-Seater Sofa, Low Backrest



Hussar 2-Seater Sofa, Medium Backrest



Hussar 2-Seater Sofa, High Backrest



Hussar Small Pouffe



Hussar Large Pouffe